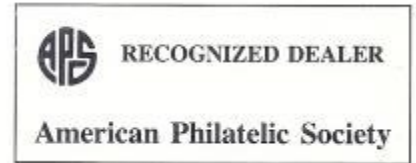


CAMPMAN STAMPS
5621 TAHOE DR.
LAS VEGAS, NV, 89142
EMAIL ME: glencampman@yahoo.com or
seniorman77@yahoo.com



ETHIOPIA LIST DATED JANUARY 15, 2024

LINK TO MY EBAY STORE:

GO TO WWW.STORES.EBAY.COM/STR/CAMPMANSTAMPS

This link will open to my US and Worldwide list of over 1500 items with
PHOTOS on EBAY

AS ADVERTISED IN THE AMERICAN PHILATELIST
CHECK OUT MY WEBSITE AT
WWW.CAMPMANSTAMPS.COM

**BEST HOURS TO REACH ME
BY CELL PHONE (702-217-8312):**

**MON-SAT: 06:00—08:30AM; 09:45-12:00 NOON:
3:30—6:30PM (EST)**

**I DO NOT HAVE A SECRETARY; I RECEIVE A LARGE
NUMBER OF UNWANTED SALES CALLS; IT IS
ADVISABLE TO LEAVE A BRIEF MESSAGE AND
TELEPHONE NUMBER.**

I have been on EBAY for 20 years, AND find that
It is time consuming to scan, upload and
process lower priced stamps. In addition,
because of the percentage (10-12%) charged by
EBAY, I find it is not cost effective to list lower
priced issues. Therefore, A printed list seems to
be a better alternative for these stamps.

I ACCEPT VISA AND M/C THRU PAYPAL.

You are invoiced to your Email address.
You make payment **SECURELY** with your
credit card to PayPal.

1. Call, mail or email me your selections with mailing address.
2. When your order is ready to ship I send an invoice to your EMAIL for your approval.
3. Upon approval I bill you securely thru PayPal for payment.
4. Upon receipt of payment, shipment is made.

OTHER FORMS OF ACCEPTABLE PAYMENT

**PERSONAL CHECK—HOWEVER, THERE IS A 7
BUSINESS DAY WAIT TIME BEFORE SHIPMENT IS
MADE FOR NEW CUSTOMERS.**

**MONEY ORDER, CASHIERS CHECK— SHIPMENT
IS MADE WITHIN 48 HOURS**

**ZELLE PAYMENTS MAY ALSO BE MADE TO MY
PHONE NUMBER AT 702-217-8312. FROM MY
UNDERSTANDING, ONCE MADE, A ZELLE PAYMENT
CANNOT BE REVERSED. IN THIS INSTANCE I WILL
MAKE ANY REFUND OVER \$2.00 BY CHECK AND US
MINT POSTAGE STAMPS UNDER THIS AMOUNT.**

**BUYING COUNTRY COLLECTIONS,
BUYING COMPLETE SETS,
PAYING HIGHEST PRICES
VERY LIGHT HINGED (1 TIME) and
USED AT REDUCED PRICES, YOU
MAY SHIP THESE FOR MY OFFER
(NO MORE THAN 2 SETS OF ANY
ONE ISSUE)**



THERE IS A HUMONGOUS AMOUNT OF US POSTAGE AVAILABLE IN THE MARKET PLACE. AS A RESULT, I BUY;

18c, 25c AND 34c MINT, FULL GUM DENOMINATIONS 48% OF FACE.

18c, 25c AND 34c MINT, FULL GUM SHEETS WITH NO DINGS, FINGERPRINTS, OR DAMAGE,
60% OF FACE

OTHER US FULL GUM POSTAGE 15c AND ABOVE— 44% OF FACE

COLLECTABLE SHEETS 15c AND ABOVE 52% OF FACE.

FOREVER SHEETS AND THOSE SHEETS ABOVE \$1.00 AT 65% OF FACE.

ANY SHEETS WITH FAULTS (DINGS, FINGERPRINTS, SEPARATIONS) WILL BE
CONSIDERED AS **SCRAP AND PAID AT 42% OF FACE.**

BEFORE SENDING ANYTHING CALL ME AT 702-217-8312 WITH DETAILS OF SHIPMENT

[LINK BACK TO PAGE 3](#)

[LINK TO PAGE 5](#)

ABBREVIATIONS

DG — DISTURBED GUM, WHERE THE GUM IS USUALLY CRYSTALIZED FROM AGE
GP — GUTTER PAIRS
HR—HINGE REMNANT
INS BLK — INSCRIPTION BLOCK
LH — LIGHT HINGED, HINGED MORE THAN ONE TIME,

PROBABLY HAS A HINGE REMNANT
M — MINT
M/S—MINIATURE SHEET
MNH — MINT, NEVER HINGED
NG — NO GUM
OG - ORIGINAL GUM
PH — PHOTO
PS — PART SET
RP — ROUGH PERFS

SS—SHORT SET
S/S — SOUVENIR SHEET
TONED GUM—GUM HAS A BIT OF BROWNING
VF—USUAL CONDITION OF MOST ISSUES
VLH — MINT, VERY LIGHT HINGED, ONE TIME, NO HINGE REMNANTS

PLEASE READ BEFORE ORDERING

POSTAGE AND INSURANCE FOR DOMESTIC SHIPPING: ALL ORDERS ABOVE \$30.00 are mailed **FREE** in a Kraft Stay Flat envelope, **SHIPPED POSTPAID AND TRACKED**. Orders under \$30.00 are 95c PLUS 50c for each additional up to a maximum of \$2.75.

INTERNATIONAL SHIPPING: A **SIGNED CUSTOMS DECLARATIONS MAY** be attached on any international mailing. **I WILL WARN THE BUYER IN ADVANCE IF A CUSTOMS CERTIFICATE IS REQUIRED.** MAILING FOR SUCH ORDERS WILL BE \$13.95. I AM NOT responsible for any import or VAT taxes. There is a flat fee of \$1.95 on all shipping plus 50c for each additional; PAYPAL is recommended for international payments.

SALES TAX: NO purchases will be assessed State Sales Tax. I will pay such tax to the proper taxing authorities.

RETURNS: In the unlikely event that any item is judged to be unsatisfactory, a 14 day return time is allowed. **There are no returns for U.S. postage lots which are sold at face or below.** I do not issue credit slips, refunds under \$2.00 will be given in US postage stamps. Refunds over \$2.00 will be credited to credit cards or by check.

MISTAKES: **MY FAULT, YOUR FAULT, NOBODY'S FAULT,** I will try and take care of any problem associated with your transaction. Therefore, if you send an order and something does not meet your approval or expectations let me know. I will make every effort to make it right. In my opinion it is equally important to make a sale as well as to accept a return (See Returns, above).

PAYMENT: (1) I accept checks, charge cards, zelle and money orders. (2) If I have your email address, I can invoice you directly thru PAYPAL (SECURELY). You may then pay the invoice using your charge card. (3) Those who are members of the **ASDA or APS** may receive stamps on approval.

CONTACT ME BY EMAIL AT: GLENCAMPMAN@YAHOO.COM

ISSUES PRINTED FROM 1895 TO 1944 WILL NOT BE OF THE SAME QUALITY AS THOSE PRINTED FROM 1945 AND LATER

<u>1895 REGULARS</u>	
<u>(THESE ARE ALL MINT, OG, HINGED UNLESS OTHERWISE STATED)</u>	
1, 1/2g, GREEN, MENELIK	2.45
2, 1/2g RED, MENELIK	2.45
3, 1g BLUE, MENELIK	2.45
4, 2g BROWN, MENELIK	2.45
5, 4g LILAC, LION	2.45
6, 8g VIOLET, LION	2.45
F/VF, MNH	2.75
7, 16g BLACK, LION	2.45
VF, MNH	2.95
1-7 (7), CSET, VF, MINT, OG	14.95
 <u>1901 OVERPRINTS</u>	
8-14, MINT, CSET, MINT, LH, OG	155.00
 <u>1902 OVERPRINTS</u>	
18, 2G, BROWN	
F/VF, MINT, OG,	9.95
19, 4G, LILAC	
F/VF, MINT, OG,	17.45
15-21, CSET, USED, LO COLONS	99.00
 <u>1903 OVERPRINTS</u>	
22, 1/4g GREEN	
VF, MINT, OG, VLH	6.75
23, 1/2g RED	
VF, MINT, OG,	9.75
24, 1g BLUE	
VF, MINT, OG,	10.95
25, 2g DARK BROWN	
F/VF, MINT. OG,	12.75
F/VF, MINT, NO GUM	7.95
26, 4g LILAC	
F/VF, MINT, OG, BLURRED COLON	19.95
27, 8g VIOLET	
MINT, OG, F/VF,	29.45
28, 16g BLACK	
MINT, OG, F/VF	47.95
 <u>1904 OVERPRINTS</u>	
36-42, USED, CTO, SET WAS NEVER ISSUED,	295.00
 <u>1905 OVERPRINTS</u>	
51, 5c ON 1/4g	

MINT, OG, LH	26.75
54, HALF OF 1/2g, LH, OG, VF	6.45
UNSEVERED, LH, OG, F/VF	19.95
5c ON HALF OF 1/2g, USED ON PIECE	8.45
55, 5c ON 16g BLK	125.00
 <u>1906 OVERPRINTS</u>	
57-63, CSET, MINT, LH, OG, F/VF	89.95
USED, CTO	89.95
64-70, MINT, OG, LH, F/VF	115.00
 <u>1907 SURCHARGES</u>	
71, 1/4 ON 1/4g GREEN	
F/VF, OG, LH	4.75
73, 1 ON 1g BLUE	
F/VF, OG, LH	6.95
74, 2 ON 2g DARK BRN	
F/VF, OG, LH	7.75
75, 4 ON 4g LIL BRN	
F/VF, OG, LH	8.75
76, 8 ON 8g VIO	
F/VF, OG, LH	18.95
77, 16 ON 16g BLACK	
F/VF, OG, LH	29.95
LH, OG, SPACE FILLER, TINY PIN HOLE	7.95
71-77, MINT, LH, OG, F/VF	73.95
F/VF, USED,	69.95
 <u>1908 SURCHARGES</u>	
78, 1pi ON 1/2g RED,	
F/VF, OG, LH	9.45
USED	8.25
80-86, MINT, LH, OG, F/VF	31.75
 <u>1909 REGULAR ISSUES</u>	
87-93, MENELIK, LH	32.75
USED	24.75
89, 1g THROWN, VF, MINT, LH, HR	2.45
 <u>1917 ISSUES</u>	
101-07, 1909 HAND STAMPS	
MINT, F/VF, OG, LH, HR	57.95
F/VF, USED	34.95
108-15, 1917 OVER PRINTS, NO 111. VF, MINT, OG, LH	7.95

111, 1917 2g BLUE, RED OVERPRINT, VF, MNH	69.95
116-19, ADDITIONAL SURCHARGES, MINT, OG, LH	19.95
 <u>1919 PICTORIALS (120-34)</u>	
REPRINTS HAVE BROWNISH GUM, ORIGINALS SMOOTH WHITE GUM	
120, 1/8g GAZELLE, ORIGINAL, LH, HR	.20
122, 1/2g LEOPARD, ORIGINAL, VF, MNH	.20
LH, HR	.15
123, 1g PRINCE TAFARI, ORIGINAL, VF, MINT LH	.15
124, 2g PRINCE TAFARI, ORIGINAL, MINT, VLH	.15
125, 4g, PRINCE TAFARI, MINT, VF, VLH, ORIGINAL	.15
126, 6g CATHEDRAL, ORIGINAL, MNH	.20
127, 8g RHINOCEROUS, ORIGINAL, MNH	.30
ORIGINAL, VLH	.20
128, 12g OSTRICHES, ORIGINAL, MNH	.35
ORIGINAL, VLH	.20
129, 1t ELEPHANT	.55
ORIGINAL, MNH	.25
ORIGINAL, VLH	.15
130, 2T BUFFALO, VF, MNH, ORIGINAL	1.75
VF, MINT, VLH, ORIGINAL	.95
131, 3t LIONS, ORIGINAL, MINT, VLH	1.25
132, 4t EMPRESS, VF, MINT, VLH, ORIGINAL	1.75
133, 5t EMPRESS, ORIGINAL, VLH	.95
134, 10t EMPRESS, ORIGINAL, MINT, LH	1.75
120-34, 1919 REGULARS, REPRINTS, MNH	4.95
HINGED, REPRINT	3.45
REPRINTS, IMPERF	7.45
135, 1919 4g SURCHARGE, MINT, OG, LH, HR	1.75
USED	2.25
 <u>1921-22 SURCHARGES</u>	

[RETURN TO PAGE 2 - COUNTRY LIST](#)

[LINK TO PAGE 45](#)

ETHIOPIA - ALL MNH, UNLESS OTHERWISE STATED

[LINK BACK TO PAGE 43](#)

136-41, 1919 STAMPS SUR- CHARGES, USED	17.95
<u>1925-28 ISSUES</u>	
148, 1/2g ON 8g, VF, MNH	1.95
149, 1g ON 6g, VF, LH, DG	37.95
<u>1928 ISSUES</u>	
155-164, REGULARS, VF, MNH	14.95
VF, HINGED, HR	9.95
165-74, POST OFFICE, MINT, VF, VLH	19.95
175-179, PRINCE TAFARI, MINT, HINGED, HR	17.45
<u>1930 ISSUES</u>	
180-89, NUMBERS 155-64 OVERPRINTED, VF, MINT, OG, LH,	18.95
190-99, NUMBERS 155-64 OVERPRINTED, VF, MNH	21.45
VF, MINT, OG, LH,	16.95
200-209, CORONATION, NUMBERS 155-64, HANDSTAMPED, MINT, OG, VLH	13.95
MINT, OG, LH	9.95
210-16, CORONATION, ALL MNH EXCEPT LO VAL VLH	5.95
VLH	4.45
<u>1931 ISSUES</u>	
217-30, SURCHARGES, VF, MINT, OG, LH, HR	10.95
232-41, REGULARS, NOT, REPRINTS, THICK PAPER, MINT, OG, VLH	33.95
<u>1936 ISSUES</u>	
242-46, SURCHARGES, VLH	7.95
<u>1942-43 ISSUES</u>	
247-49, SELASSIE I VF, MNH	3.25
VF, VLH	2.15
USED PAIR, FIRST DAY CANCEL	4.95
250-57, HAILE SELASSIE, VF, MNH	10.95
VF, MINT, OG, VLH	7.95
USED	2.95

251, 8c SELASSIE I, MINT, OG, VLH	.45
253, 10c SELASSIE I, MINT, OG, VLH	.65
254, 12c SELASSIE I, MINT, OG, VLH	.95
<u>1943 ISSUES</u>	
258-62, OBELISK RESTORATION, VF, MNH	345.00
MINT, OG, VLH	295.00
<u>1944 ISSUES</u>	
263-67, MENELIK II BIRTH, VF, MNH	13.95
VF, VLH	11.95
VF, MINT, LH, HR	8.45
USED, LO VAL DAMAGED	3.95
<u>1945 ISSUES</u>	
268-272, RED CROSS, VF, VLH	11.75
VF, LH, HR	9.95
268-72, NO RED CROSS, OVERPRINT, VF, MNH	2.95
<u>1947 ISSUES</u>	
273-77, POSTAL SYSTEM, VF, MINT, VLH	37.95
278-80, C21-C22, SELASSIE AND ROOSEVELT, VF, MNH	31.95
VF, VLH	25.95
281-83, SELASSIE DYNASTY, VF, LH, HR	9.95
283, \$1 KING SAHLE, VF, MINT, VLH	4.45
284, #255 SURCHARGED, VF, MNH	54.95
285-96, 1947-53 REGULARS (ETHIOPIAN SCENES), VF, MNH	33.95
VF, MINT, LH (SOME HINGE REMNENTS)	24.95
VF, USED	8.75
286a, 2c TRINITY CHURCH. NO WMK, VF, USED	7.95
<u>1949 ISSUES</u>	
297-301, LIBERATION, VF, MINT, VLH	12.95
299, 50c LIBERATION, MNH	3.25
<u>1951 ISSUES</u>	

308-13, ABBAYE BRIDGE, LH, HR	55.95
314-19, BATTLE OF ADWA, MINT, OG, VLH	37.95
320-26, BIRTHDAY, VF, MINT, OG, VLH	13.45
USED	4.85
327-35, ERITREAN FEDERATION, VF, MINT, OG, VLH	61.45
USED	12.45
<u>1955 ISSUES</u>	
342-44, RED CROSS, VF, MNH	7.95
MINT, VF, OG, VLH	5.95
345-50, SILVER JUBILEE MINT, VF, OG, VLH	11.50
MINT, NO GUM	7.25
USED	6.25
351-54, JUBILEE FAIR VF, MNH	3.95
VF, MINT, VLH	2.75
<u>1960 ISSUES</u>	
355-556, WRY, VF, MNH	2.95
VLH	2.25
357-59, AFRICAN STATES USED	1.75
360-64, CORONATION VF, MNH	11.95
<u>1961 ISSUES</u>	
365, 80c FREEDOM DAY VF, MNH	1.95
VF, VLH	1.25
VF, USED	.85
366-68, LIBERATION, VF, MNH	2.25
VF, VLH	1.45
VF, USED	1.15
369-374, ANIMALS, VF, MNH	7.95
VF, VLH	5.45
VF, USED, CTO	1.85
USED (CTO)	2.15
375-77, ANNIVERSARY, VF, MNH	3.75
VF, MINT, VLH	2.65
<u>1962 ISSUES</u>	
378-82, SOCCER CUP VF, MNH	2.85
VF, MINT, VLH	1.95
VF, USED	.80
383-85, WHO, USED	1.45
	.75

[RETURN TO PAGE 2 - COUNTRY LIST](#)

[LINK TO PAGE 46](#)

[LINK BACK TO PAGE 44](#)

ETHIOPIA - ALL MNH, UNLESS OTHERWISE STATED

386-90, BIRDS,	13.45
VLH	8.45
USED	4.95
391-95, FEDERATION,	1.45
USED	1.15
396-402, CORONATION	4.45
VLH	3.15
VF, USED	2.10

1963 ISSUES

403-05, COMMUNICATIONS	
VF, MNH	1.95
VF, MINT, VLH	1.15
406-09, FAO CAMPAIGN	
VF, MNH	1.15
VF, MINT, VLH	.95
VF, USED	.75

1964 ISSUES

410-14, SPIRITUAL LDERS,	
VF, MNH	3.95
VF, MINT, VLH	2.25
USED	1.95
415-19, EMPRESSES,	6.45
VLH	4.25
USED	2.75
420-24, EDUCATION	
VF, MNH	2.15
VF, USED	.95
425-27, ROOSEVELT	
VF, MNH	1.65
VF, MINT, VLH	1.15
VF, USED	1.10
428-33, LEADERS,	
VF, MNH	2.75
VF, MINT, VLH	1.95

1965 ISSUES

434-38, FLOWERS,	
VF, MNH	2.75
VF, USED	2.10
439-41, ITU,	
VF, MNH	1.75
VF, MINT, VLH	.95
VF, USED	.85

442-48, ETHIOPA SCENES,	
VF, MNH	2.35
VF, MINT, VLH	1.75
449-51, ICY EMBLEM	
VF, MNH	2.35
VF, MINT, VLH	1.45
VF, USED	.95
452-54, BANKS	1.55
VLH	.95
USED	.95
455-57, "LIGHT & PEACE"	1.25
458-62, INSTRUMENTS	3.75
463-65, LEADERSHIP	
VF, MNH	1.15

VF, MINT, VLH	.75
VF, USED	.55
466-467, UNESCO	.95
468-469, WHO HQS	1.55
VLH	.95

1967 ISSUES

470-72, EXPO '67,	1.75
VF, MINT, VLH	1.20
USED	.65
473-75, RAILROAD	5.45
VLH	3.75
USED	1.95
476-80, BUTTERFLIES,	
VF, MINT, VLH	7.45
481-83, EMPEROR SELASSIE	4.20
USED	.95
484, EMPEROR SELASSIE,	
VF, MNH, S/S OF 1	5.95
485-87, MICROBIOLOGY	1.45
VLH	.95
USED	.85
488-91, TOURIST YEAR	9.95
VLH	7.95
492-96, CROSSES	2.35
VLH	1.75
USED	.95

1968 ISSUES

497-99, EMPEROR THEODORE	1.95
500-01, HUMAN RIGHTS	1.65
VLH	1.00
VF, USED	1.25
502-04, SHAH OF IRAN.	1.15
VF, VLH	.75
505-07, PEACE STRUGGLE,	
WITH TABS	4.95
NO TABS	1.95
VLH, NO TABS	1.25
508-09, WHO,	1.45
VLH	.95
510-14, OLYMPICS,	2.25
VLH	1.65
515-21, COSTUMES,	
VLH	3.75

1969 ISSUES

522-24, POSTAL SVC	1.55
525-26, ILO	1.45
VLH	.95
USED	.95
527-29, RED CROSS	1.35
VLH	.95
530-535, COINS	
VLH	3.95
536-40, TOURISM	2.25
541-43, UN ANNIVERSARY	
VLH	1.45
USED	1.55
544-47, CROSSES	2.75

1970 ISSUES

548-52, POTTERY,	3.25
553-57, ROCK CHURCHES	1.85
558-62, TROPICAL FISH	3.25
563-65, EDUCATION	1.15
USED	1.15
566-68, 1970 MAP,	.95
569-571, CORONATION	1.85
VLH	1.45
572-74, POSTS	1.95
575-81, COSTUME TYPE	3.75
VLH,	2.45
582-586, ETHIOPIAN	
AIRLINES,	2.75
WITH TABS	6.45
VLH, NO TABS	2.45

1971 ISSUES

587-91, PAINTINGS	2.95
VLH	2.15
592-94, DISRIMINATION,	2.45
VLH	1.75
595-98, PAINTINGS	2.95
VLH	2.15
599-603, COMMUNICATIONS,	3.75
VLH	2.15
604-08, UNICEF	2.75

1972 ISSUES

609-12, SECURITY COUNCIL,	
VLH	3.95
613-16, RIVER BOAT	
VLH	2.35
617-19, PERSIAN EMPIRE	2.95
VLH	1.95
620-24, ARCHITECTURE,	2.95
VLH	2.25
625-29, BIRTHDAY,	2.45
630-33, OLYMPICS,	2.95
VF, USED	2.45
634-36, BIBLE SOCIETY	2.75
VLH	2.15
VF, USED	2.45
637-39, SECURITY COUNCIL	1.75
VLH	1.25
VF, USED	1.75

1973 ISSUES

640-42, ANTI POLUTION	2.15
VLH	1.55
VF, USED	1.85
643-45, INTERPOL,	2.75
VLH	1.95
VF, USED	2.45
646-50, ART	3.25
VLH	2.45
651-55, OAU ANNIVERSARY	2.45
656-60, SCOUTS	3.25

[RETURN TO PAGE 2 - COUNTRY LIST](#)

[LINK TO PAGE 25](#)

ETHIOPIA - ALL MNH, UNLESS OTHERWISE STATED

[LINK BACK TO PAGE 24](#)

VLH	2.65
VF, USED	2.95
661-63, WMO	2.45
VLH	1.75
664-68, HOSPITAL,	3.45
VLH	2.25
VF, USED	2.65
669-71, HUMAN RIGHTS	1.65
VLH	1.15
672-79, SELASSIE, REGULARS, USED	17.95

1974 ISSUES

690-694, BASKETS	2.15
USED	1.45
695-699, CATTLE PLAGUE	2.45
700-03, FOUNDATION	1.95
USED	1.85
704-08, ROBES	2.95
709-11, WORLD POPULATION	1.45
VLH	1.15
VF, USED	1.15
712-15, POSTAL UNION	2.15
VLH	1.65
716-19, FESTIVAL	1.55
VLH	1.15
VF, USED	1.75

1975 ISSUES

720-24, BUTTERFLIES	5.95
VLH	3.95
725-730, MURALS	2.65
USED	2.25
731-735, WILD ANIMALS	4.75
VLH	3.75
USED	4.25
736-38, WOMEN'S YEAR	1.95
VLH	1.45
USED	1.55
739-42, POSTAL MUSEUM	2.45
VLH	1.75
USED	1.65
743-47, REVOLUTION	2.10
VLH	1.55
USED	1.65
748-50, UNITED NATIONS	1.95
USED	1.55
751-57, HAIR STYLES	3.95
VLH	2.75
USED	3.25

1976 ISSUES

758-62, FLOWERS,	2.95
VLH	2.45
USED	2.25
763-767, AFRICAN CUP	2.75
768-770, TELEPHONE	
VF, MNH	1.95
VLH	1.55

USED	1.95
771-75, JEWELRY	1.95
USED	1.65
776-78, OLYMPICS	2.15
VF, USED	
779-83, DEVELOPMENT	1.95
USED	1.45
784-88, EMBLEM,	1.65
789-806, SUNBURSTS,	19.45
807-11, AIRLINES	2.65
812-16, REPTILES	3.45
USED	2.65

1977 ISSUES

817-21, RELIEF AND REHAB	2.25
USED	2.15
822-26, ARCHEOLOGICAL SITES	2.45
827-31, HIGHWAY,	1.95
USED	1.65
832-38, HAIR STYLES	2.65
VF, USED	2.25
839-43, TOWNS	1.65
VF, USED	1.25
844-848, SHELLS	6.25
VF, USED	2.25
849-53, REVOLUTION	1.85
VF, USED	1.55
854-858, INSECTS	3.85
VF, USED	2.75
859-863, REVOLUTION	2.25
USED	1.75

1978 ISSUES

864-868, SALT WATER FISH	4.75
VLH	3.25
869-873, ANIMALS	2.35
VF, USED	2.25
874-878, MOTHERLAND	1.65
VF, USED	1.45
879-83, ANCIENT BRONZES	1.85
VF, USED	1.85
884-88 SOCCER,	2.35
VF, USED	2.15
889-893, NAMINIA DAY	1.85
VF, USED	1.85
894-895, REVOLUTION,	1.45
VF, USED	1.25
896-900, TECH COOP,	1.95
VF, USED	1.45
901-05, HUMAN RIGHTS	1.75
USED	1.55
906-910, ANTI APARTHEID	1.65
USED	1.45

1979 ISSUES

911-15, CARVED STONES,	1.65
USED	1.55
916-20, SHEMMA INDUSTRY	1.75
VF, USED	1.55
921-25, TREES,	2.25
VF, USED	1.85
926-930, DEVELOPMENT	1.55
VLH	1.15
VF, USED	1.45
931-35, IYC	2.15
VF, USED	1.95
936-40, REVOLUTION	2.15
VF, USED	1.75
941-45, COMMUNICATIONS	2.15
USED	1.85
946-950, CONTAINERS	2.45
USED	2.15

1980 ISSUES

951-55, BOWLS,	2.45
956-60, BIRDS OF PREY,	5.25
961-63, SMOKING	2.45
964-68, LENIN	1.95
969-73, ANIMALS	3.75
974-76, OLYMPICS,	1.95
977-90, REVOLUTION	2.15
981-85, FOLK CRAFT	2.15
VLH	1.75
986-90, TOOLS	1.85

1981 ISSUES

991-93, BRIDGE OPENING	2.15
994-999, HERITAGE YEAR	3.15
1000-1005, HERITAGE YEAR	3.25
1006-10, VESSELS	1.95
1011-15, DISABLED	1.95
1016-18, REVOLUTION	1.85
1019-23. FOOD DAY	2.15
1024-27, BRONZE TYPE	1.95

1982 ISSUES

1028-32, HORN ARTIFACTS	1.95
1033-37, COFFEE CULTIVATION,	2.10
1038-42, WORLD CUP	2.15
1043-47, TB BACILLUS	1.95
1048-49, REVOLUTION	1.85
1050-54, STANDARDS DAY	1.95
1055-59, ENVIRONMENT	1.95

1983 ISSUES

1060-64, SOF OMAR CAVE	1.75
1065-66, ECON. COMM.	1.75
1067-68, MARITIME ORG	1.95
1069-71, WCY	2.10
1072-74, REVOLUTION	1.35
1075-79, MUSICAL INSTRUMENTS, VF, MNH	1.65

[RETURN TO PAGE 2 - COUNTRY LIST](#)

[LINK BACK TO PAGE 46](#)

ETHIOPIA - ALL MNH, UNLESS OTHERWISE STATED

1080-83, BUTTERFLIES, VF, MNH	4.25
<u>1984 ISSUES</u>	
1084-88, ANTI-APARTHEID	2.95
1089-1092, FLOWERS	3.25
1093-95, HOUSES	2.15
VF, USED	1.85
1096-1105, REVOLUTION	6.45
1106-09, SPORTS	1.95
<u>1985 ISSUES</u>	
1110-1113, BIRDS	3.95
1114-17, FAUNA	3.55
1118-21, FISH,	3.45
1122-25, PLANTS	1.95
<u>SEMI POSTALS</u>	
B1-B5, 1936 RED CROSS, VLH	2.15 1.75
USED	2.95
B1, VLH	.40
B2, MNH, DG	.25
B3, MNH, DG	.35
B4, MNH, DG	.35
B5, 1t PURPLE, MNH DG	.55 .35
B11-B15, 1950 RED CROSS, MINT, LH, HR	5.95
B16-B20, 1951 OVERPRINTS, MINT, LH, HR	13.95
B21-B26, ANTI-TUBERCULOSIS, MINT, VLH	9.75
USED	6.75
B36-B40, RED CROSS	7.45
B41-B44, DISABLED	3.25
<u>AIRMAILS</u>	
C1-10, ARRIVAL OF FIRST AIRPLANE, USED	8.45
C11-C17, EMPIRE SYMBOLS, VLH	5.95 4.15
USED	8.25
C18-C20, 1947 SURCHARGES, VF, MNH	195.00
C23-33, 1947-55 SCENES, VF, USED	17.75
C34-37, UPU, USED	3.95
C38-C40, AIRLINES, USED	1.35
C41-45, CONSTITUTION, USED	5.20
C46-C50. CAPITALS VLH	3.25 1.95
C57-C59, AFRICAN STATES, VLH	2.25 1.85
C60-C63, ECONOMIC CONF.	1.75

VLH	1.25
USED	.95
C64-C70, AIRMAIL SVC USED	5.25 2.75
C71-73, VLH	1.45 1.00
C74-C76, AFRICAN UNITY, USED	1.45
C77-81, BIRDS VLH	6.95 4.95
USED	3.00
C82-85, OLYMPICS USED	2.65 1.15
C86-C88, USED	2.25
C89-C96, PICTORIALS VLH	17.45 10.95
USED	7.00
C41-C45, 1956 CONSTITUTION, VF USED	3.20
C97-101, USED	3.00
C102-06, 1966 ANIMALS, USED	4.95 1.25
C107-11, 1967 BIRD TYPE USED	1.75
<u>POSTAGE DUES</u>	
1896, J1-J7, LH, HR	5.45
1906, J22-J28, LH, HR, HI VAL SHORT PERFS	24.75
1908, J36-42, VLH LH, HR	19.75 11.45
1912, J43-49, LH, HR	39.95
<u>OCCUPATION STAMPS (ITALIAN ADMINISTRATION)</u>	
N4, 30c BROWN	4.75
N5, 50c CARMINE	2.00
N6, 75c ORANGE	18.00
N1-N7, CSET, MNH VLH,	145.00 39.75
LH, HR	29.95
USED	19.95

--	--